

Rev.	Description	Date	Drawn by	Checked by	Approved by
A	New Drawing	2006/12/24	Michael	Gavin	Stephen

NOTE:

Material and Finish:

1. Housing: Hi. Temp. Plastic (UL94V-0), Black.
2. Terminal: Copper Alloy, Gold Plating on Contact Area, Tin Plating on solder Tail.
3. Shield: Copper Alloy, Gold Plating Over All.

Electrical Characteristics:

1. Current Rating: 0.5 Amp. Max..
2. Dielectric Withstand Voltage: 500V AC RMS for 60Seconds.
3. Insulation Resistance: 100M Ohms Min. at 500V DC.
4. Contact Resistance: 100m Ohms Max..

Mechanical Characteristics:

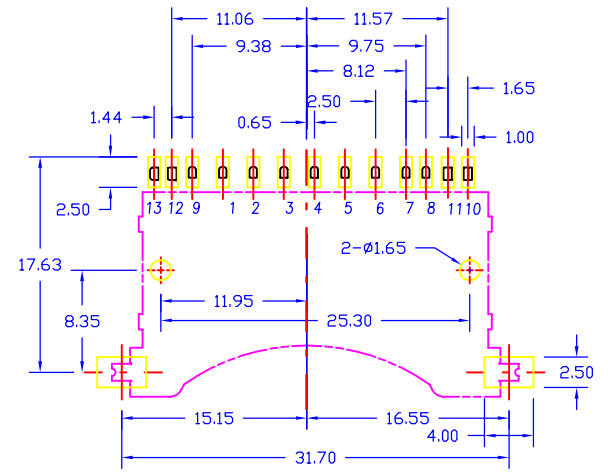
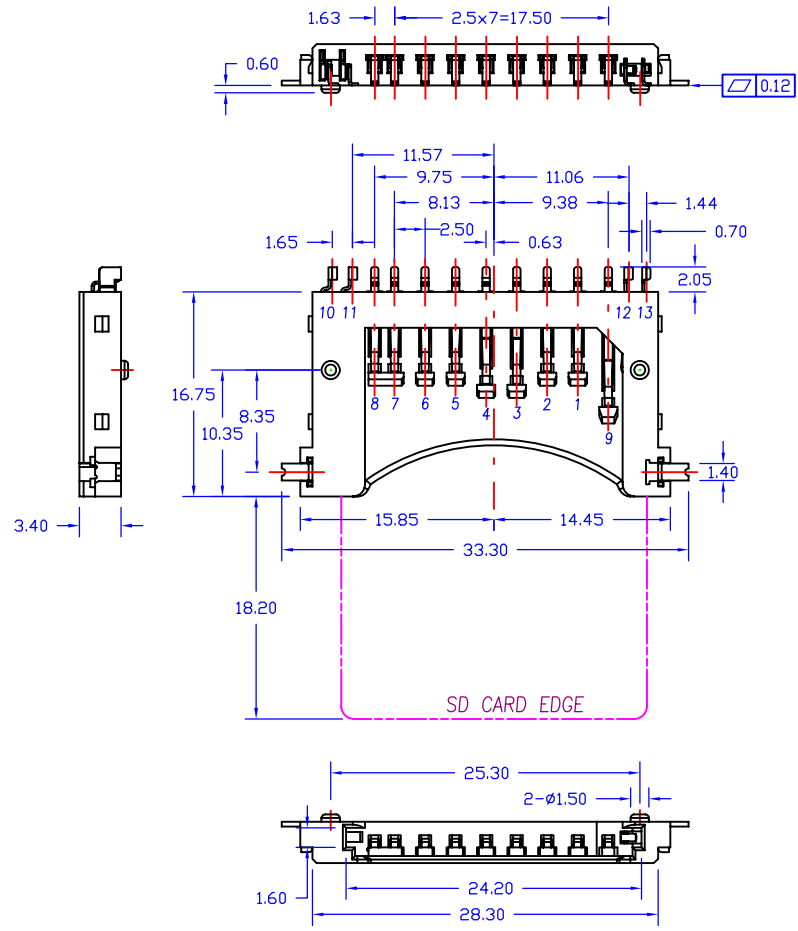
1. Operating Temperature: -25°C ~ +90°C
2. Contact Us for Customization.

Table 1

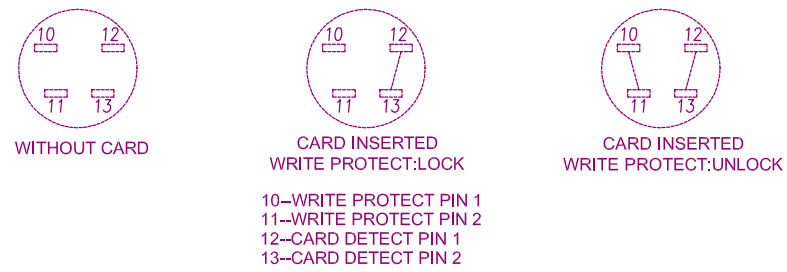
Part No.	Dimensions			
H=3.40mm	Pos.	A	B	C
AEMCGS15B-013L	13			

Table 2

Pin No.	Name	Description
1#	CD/DAT3	Card detect/Data I/O
2#	CMD	Command
3#	VSS1	Ground
4#	VDD	Power
5#	CLK	Clock
6#	VSS2	Ground
7#	DAT0	Data I/O
8#	DAT1	Data I/O
9#	DAT2	Data I/O



PCB Layout (Top View)



RoHS Compliant

Tolerance 0.0 ±0.38 0.00 ±0.25 0.000 ±0.10	Drawn By Michael		
	Checked By Gavin		Title 2.50mm Pitch, SD Card, Surface Mount, 13P, Reverse Type, Without Cover
	Approved By Stephen		AECOM Technology Corp.
Scale 1:1	Unit mm	Drawing No. MCD15-S-01 Page 1/1	