

1

2

3

4

5

6

7

8

Rev.	Description	Date	Drawn by	Checked by	Approved by
A	New Drawing	2006/12/24	Michael	Gavin	Stephen

A

B

C

D

E

F

A

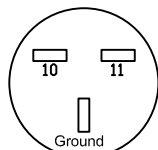
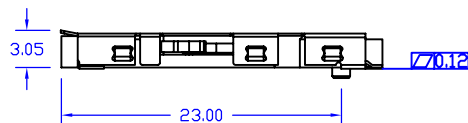
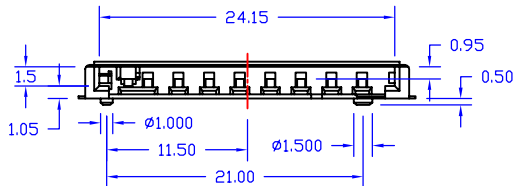
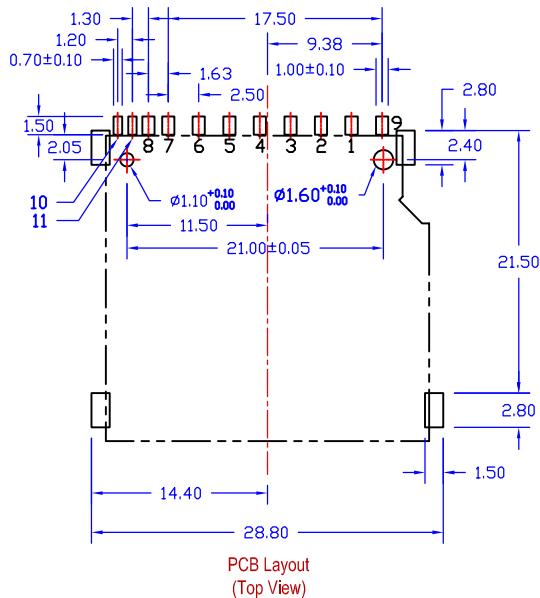
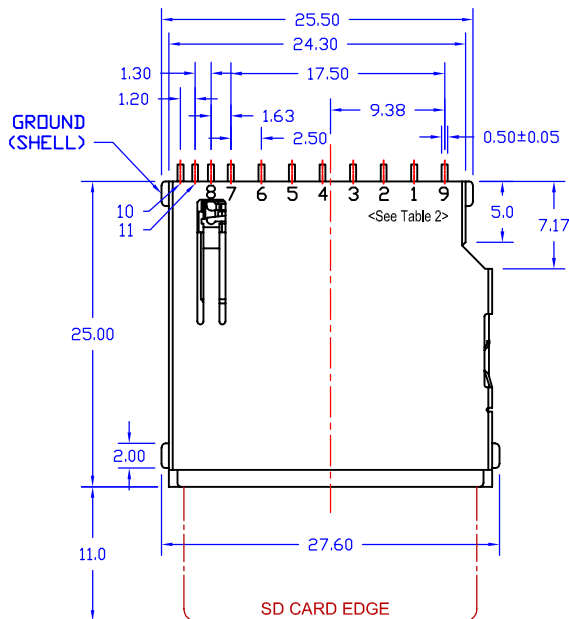
B

C

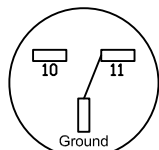
D

E

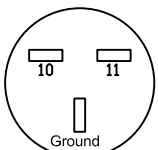
F



Without Card



Card Inserted
Write Protect:Lock



Card Inserted
Write Protwct:Unlock

10—Write Protect Pin
11—Card Detect Pin
Ground(Shell)—Common Pin

NOTE:

Material and Finish:

1. Housing: Hi. Temp. Plastic (UL94V-0), White.
2. Terminal: Copper Alloy, Gold Plating on Contact Area, Tin Plating on solder Tail.
3. Shield: Copper Alloy, Gold Plating Over All.

Electrical Characteristics:

1. Current Rating: 0.5 Amp. Max..
2. Dielectric Withstand Voltage: 500V AC RMS for 60Seconds.
3. Insulation Resistance: 100M Ohms Min. at 500V DC.
4. Contact Resistance: 100m Ohms Max..

Mechanical Characteristics:

1. Operating Temperature: -25°C ~ +90°C
2. Contact Us for Customization.

Table 1

Part No.	Dimensions			
	Pos.	A	B	C
AEMCGS14B-011L	11			

Table 2

Pin No.	Name	Description
1#	CD/DAT3	Card detect/Data I/O
2#	CMD	Command
3#	VSS1	Ground
4#	VDD	Power
5#	CLK	Clock
6#	VSS2	Ground
7#	DAT0	Data I/O
8#	DAT1	Data I/O
9#	DAT2	Data I/O

Tolerance	
0.0	±0.38
0.00	±0.25
0.000	±0.10



Scale	Unit
1:1	mm

Drawn By
Michael

Checked By
Gavin

Approved By
Stephen

AECONN

Title
**2.50mm Pitch, SD Card, Surface Mount,
11P, Normal Type, Standoff:0.0mm**

AECNN Technology Corp.

RoHS Compliant

Drawing No. MCO14-S-01
Page 1/1

1

2

3

4

5

6

7

8